

# PART2

# SOCKET

소켓

---

## 소켓

654	소켓 인덱스
656	릴레이 소켓
661	11핀 소켓
663	8핀 소켓

## 소켓

### 릴레이 소켓

	형명	전원전압	재질	중량	인증
	KH-RS-14N KH-RS-14N-8	250V / 7A	Nylon glass (흑색)	약 45g	CE UL US
	KH-RS-14M KH-RS-14M-8			약 36g	CE UL US
	KH-RS-H2C	250V / 10A		약 42g	
	KH-RS-14S KH-RS-14S-8	250V / 10A		약 36g	CE
	KH-RS-H2CS	250V / 10A		약 42g	
	KH-RS-P14	250V / 7A	Phenol resin (흑색)	약 9g	
	KH-RS-P14-8			약 7.5g	
	KH-RS-PC14			약 8g	
	KH-RS-PC14-8			약 8g	

# Socket

CE  RoHS

11 핀 소켓	형명	전원전압	재질	중량	인증
	KH-TDR-R11	250V / 10A	PBT glass ( 흑색 )	약 89g	 승인제품
	KH-RS-R11			약 57g	 승인제품

8 핀 소켓	형명	전원전압	재질	중량	인증
	KH-TDR-R8	250V / 10A	PBT glass ( 흑색 )	약 74g	 승인제품
	KH-KTS-8			약 64g	
	KH-RS-R8			약 43g	 승인제품
	KH-MR-8			약 38g	
	KH-RS-M8	250V / 7A	Nylon glass	약 20g	

U 릴레이

V 소켓

KOINO  655

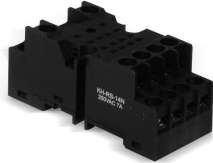
# 소켓



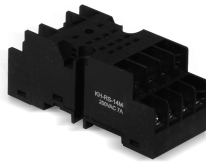
## 릴레이 소켓

### 특징

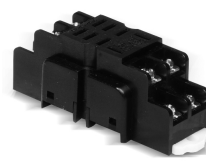
- KH-RS-14N / 14N-8, KH-RS-14M / 14M-8
- CE 인증
- UL 인증
- Max. surrounding air temperature of 40°C



KH-RS-14N  
KH-RS-14N-8



KH-RS-14M  
KH-RS-14M-8



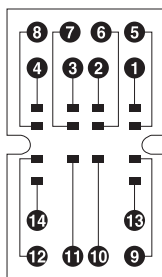
KH-RS-H2C

### 전기적 특성 및 재질

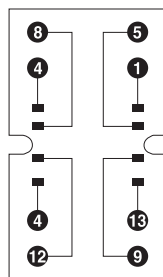
구분		KH-RS-14N KH-RS-14M	KH-RS-14N-8 KH-RS-14M-8	KH-RS-H2C
정격전압		250V		250V
정격전류		7A		10A
절연저항		100MΩ (500VDC 절연저항계)		
내전압		2,000VAC 50/60Hz 에서 1 분간		
단자볼트		M3		M3.5
배선용 단자	E	4.5mm		4.5mm
	F	Ø3.1 이상		Ø3.6 이상
	W	6.0mm 최대		6.8mm 최대
	L	15.7mm 이상		15.7mm 이상
재질		Nylon glass( 흑색 )		
사용레일		KH-TBR-2		
중량		약 45g	약 36g	약 42g
취득인증		UL:E313518, CSA22.2 NO.14-18, CE:EM61984		

### 단자번호 및 회로구성도

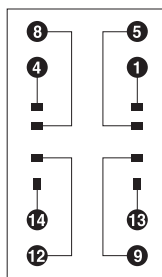
### 배선용 단자



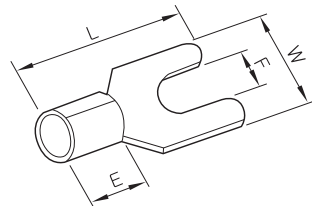
KH-RS-14N  
KH-RS-14M  
KH-RS-14S



KH-RS-14N-8  
KH-RS-14M-8  
KH-RS-14S8



KH-RS-H2C  
KH-RS-H2CS



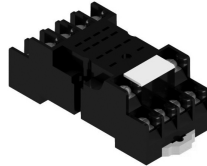
# Socket



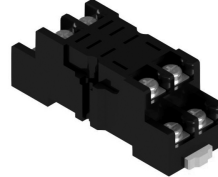
## 릴레이 소켓

### 특징

- KH-RS-14S / 14S-8, KH-RS-H2CS
- CE 인증



KH-RS-14S  
KH-RS-14S-8



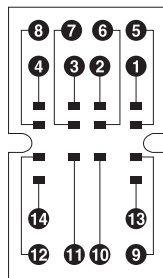
KH-RS-H2CS

### 전기적 특성 및 재질

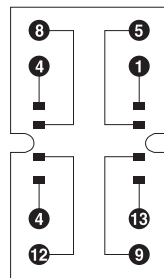
구분	KH-RS-14S KH-RS-14S-8	KH-RS-H2CS
정격전압	250V	
정격전류	10A	
절연저항	100MΩ (500VDC 절연저항계)	
내전압	2,500VAC 50/60Hz 에서 1 분간	
단자볼트	M3	M3.5
배선용 단자	E	4.5mm
	F	Ø3.1 이상
	W	6.0mm 최대
	L	15.7mm 이상
재질	PA66 (Black)	
사용레일	KH-TBR-2	
중량	약 46g	약 42g
취득인증	CE : EN 61984 (KH-RS-14S , 14S-8 만 해당 됨)	

### 단자번호 및 회로구성도

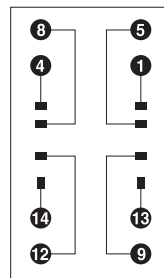
### 배선용 단자



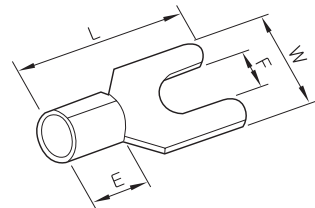
KH-RS-14S



KH-RS-14S-8



KH-RS-H2CS



U 릴레이

V 소켓

# 소켓

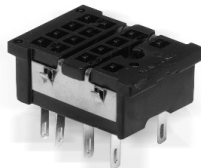
## 릴레이 소켓

### 특징

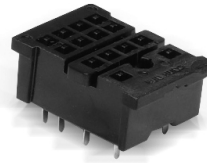
- 납땜 단자형으로 되어 있습니다.



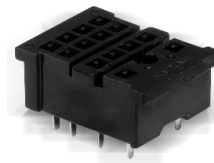
KH-RS-P14



KH-RS-P14-8



KH-RS-PC14

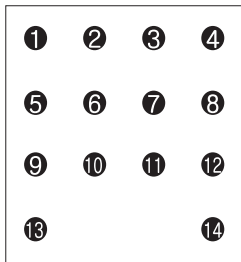


KH-RS-PC14-8

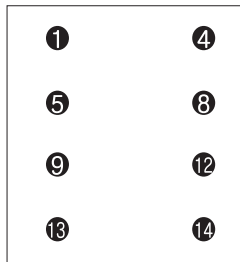
### 전기적 특성 및 재질

구분	KH-RS-P14	KH-RS-P14-8	KH-RS-PC14	KH-RS-PC14-8
정격전압	250V			
정격전류	7A			
절연저항	100MΩ (500VDC 절연저항계 )			
내전압	2,000VAC 50/60Hz 에서 1 분간			
단자형식	납땜 단자형		프린트기판 납땜 단자형	
재질	Phenol resin( 흑색 )			
중량	약 9g	약 7.5g	약 8g	약 8g

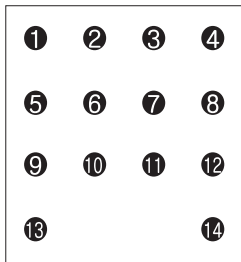
### 단자번호 및 회로구성도



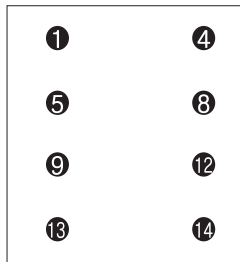
KH-RS-P14



KH-RS-P14-8

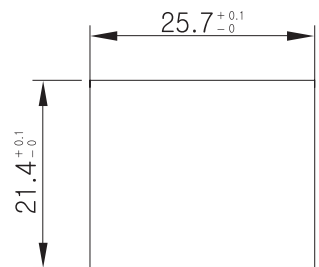


KH-RS-PC14



KH-RS-PC14-8

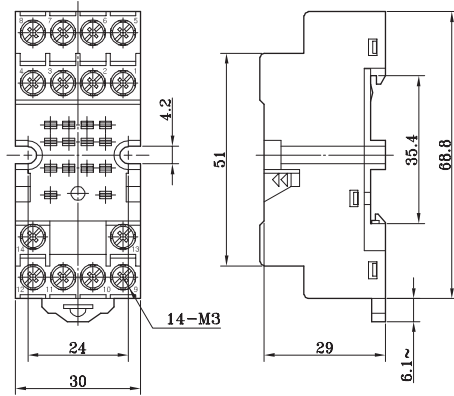
### 배선용 단자



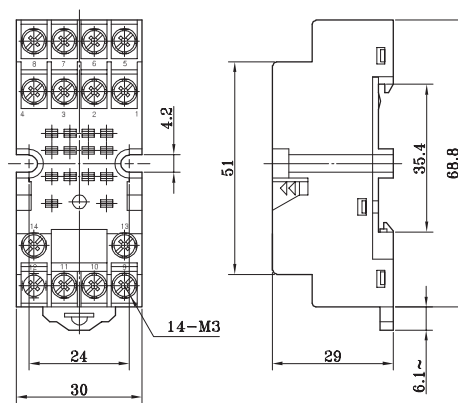
# Socket

## 외형치수도

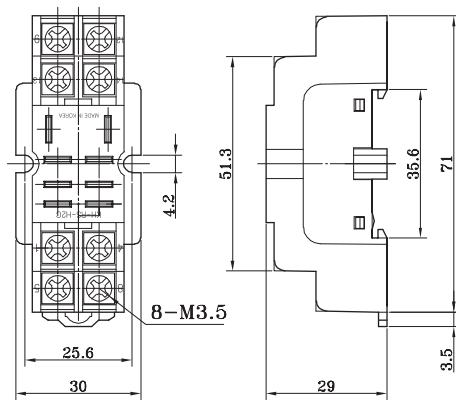
KH-RS-14N, KH-RS-14N-8



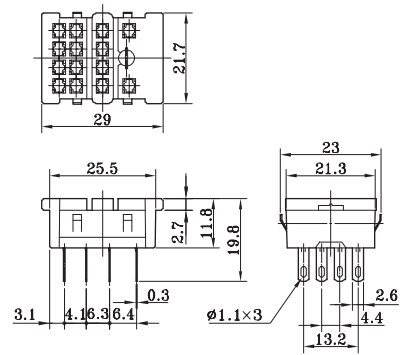
KH-RS-14M, KH-RS-14M-8



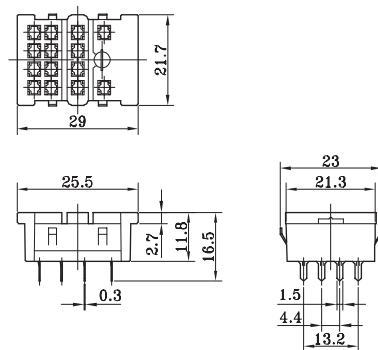
KH-RS-H2C



KH-RS-P14, KH-RS-P14-8



KH-RS-PC14, KH-RS-PC14-8



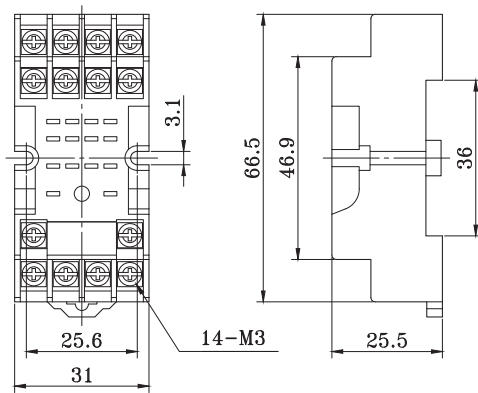
U 릴레이

V 소켓

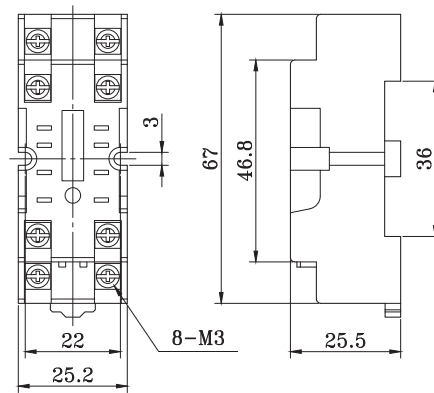
# 소켓

## 외형치수도

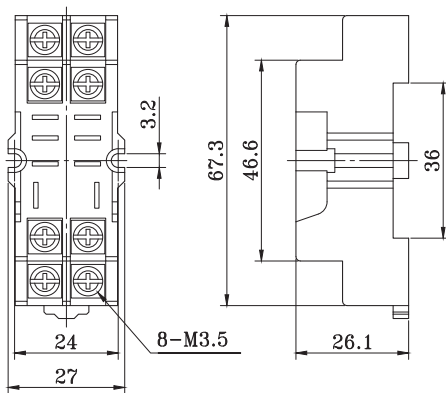
KH-RS-14S



KH-RS-14S-8



KH-RS-H2CS






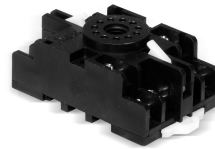
# Socket

CE  RoHS

## 11 핀 소켓

### 특징

- CE 인증
-  인증 "Surrounding air : 50°C Max."
- RoHS 제품
- 레일 취부가 가능합니다.
- 판넬에 직접 취부시 M4볼트로 고정할 수 있습니다.



KH-TDR-R11

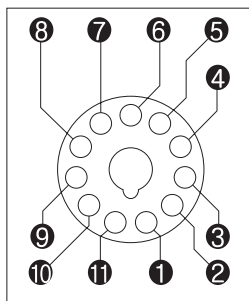


KH-RS-R11

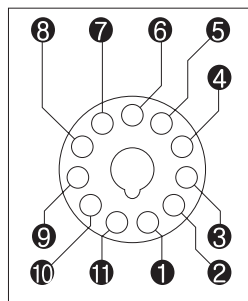
### 전기적 특성 및 재질

구분		KH-TDR-R11	KH-RS-R11
정격절연전압		250V	
정격전류		10A	
절연저항		100MΩ (500VDC 절연저항계)	
내전압		2,000VAC 50/60Hz 에서 1 분간	
단자볼트		M3.5	
배선용 단자	E	4.5mm	4.5mm
	F	Ø3.6 이상	Ø3.6 이상
	W	7.6mm 최대	6.8mm 최대
	L	15.7mm 이상	15.7mm 이상
재질		PBT glass( 흑색 )	
사용레일		KH-TBR-2	
중량		약 89g	약 57g
취득인증		UL/CUL : UL508 CAN/CSA C22.2 NO.14-05 / CE : EN 61984 / 61810	

### 단자번호 및 회로구성도

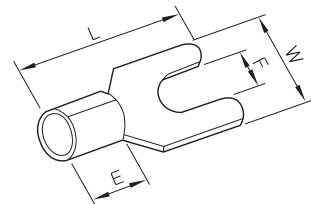


KH-TDR-R11



KH-RS-R11

### 배선용 단자



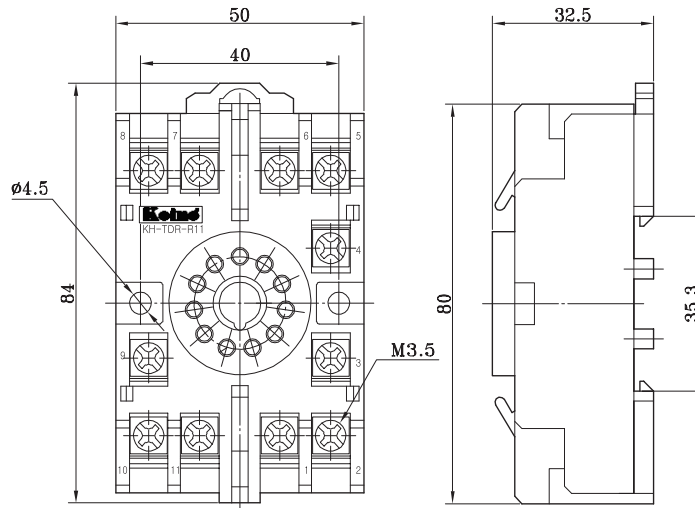
U 릴레이

V 소켓

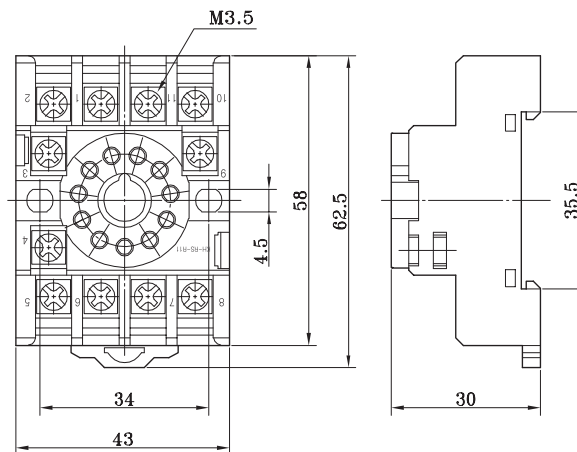
# 소켓

## 외형치수도

KH-TDR-R11



KH-RS-R11




# Socket

CE RoHS

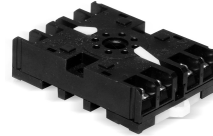
## 8 핀 소켓

### 특징

- CE 인증 (KH-TDR-R8, KH-RS-R8)
-  인증 "Surrounding air : 50°C Max."  
(KH-TDR-R8, KH-RS-R8)
- RoHs 제품  
(KH-TDR-R8, KH-RS-R8)
- 판넬에 직접 취부시 M4볼트로 고정할 수 있습니다.



KH-TDR-R8



KH-KTS-8



KH-RS-R8

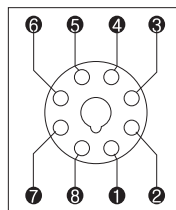


KH-MR-8

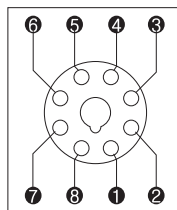
### 전기적 특성 및 재질

구분	형명	KH-TDR-R8	KH-KTS-8	KH-RS-R8	KH-MR-8
	정격절연전압	250V			
	정격전류	10A			
	절연저항	100MΩ (500VDC 절연저항계 )			
	내전압	2,000VAC 50/60Hz 에서 1 분간			
	단자볼트	M3.5			
배선용 단자	E	4.5mm		4.5mm	
	F	Ø3.6 이상		Ø3.6 이상	
	W	7.6mm 최대		7.0mm 최대	
	L	15.7mm 이상		15.7mm 이상	
재질 / 사용레일		PBT glass( 흑색 ) / KH-TBR-2			
중량		약 74g	약 64g	약 43g	약 38g
취득인증		UL/CUL : UL508 CAN/CSA C22.2 NO.14-05 CE : EN 61984 / 61810 / (KH-TDR-R8 , KH-RS-R8 만 해당 됨 )			

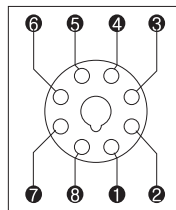
### 단자번호 및 회로구성도



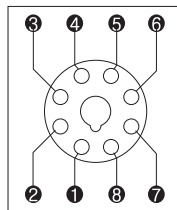
KH-TDR-R8



KH-KTS-8

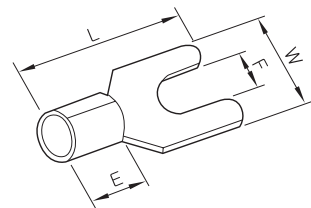


KH-RS-R8



KH-MR-8

### 배선용 단자

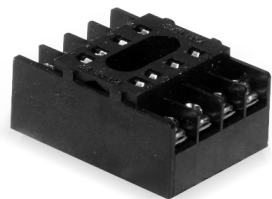


U 릴레이

V 소켓

# 소켓

## 8 핀 소켓



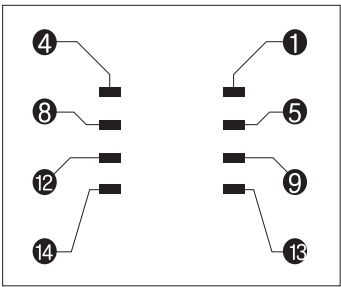
KH-RS-M8

전기적 특성 및 재질		
구분	혁명	KH-RS-M8
정격절연전압		250V
정격전류		7A
절연저항		100M $\Omega$ (500VDC 절연저항계 )
내전압		2,000VAC 50/60Hz 에서 1 분간
단자볼트		M3
배선용 단자	E	4.5mm 이상
	F	$\varnothing 3.1$ 이상
	W	6.0mm 최대
	L	15.7mm 이상
재질		Nylon glass( 흑색 )
중량		약 20g

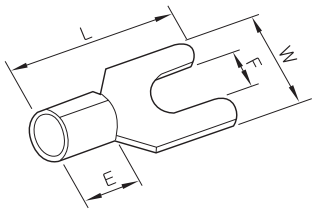
단자번호 및 회로구성도

배선용 단자

KH-RS-M8



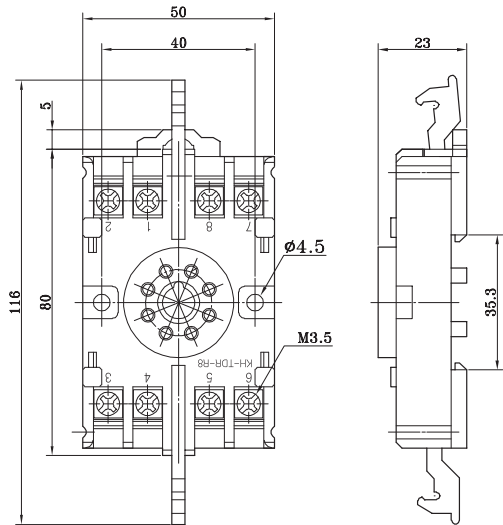
TOP VIEW



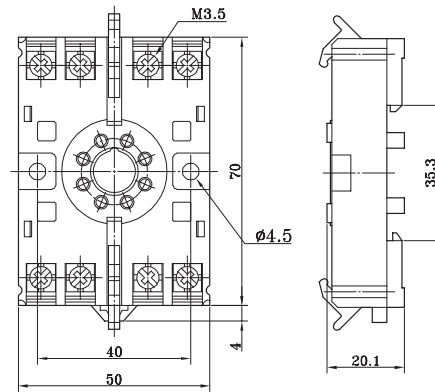
# Socket

## 외형치수도

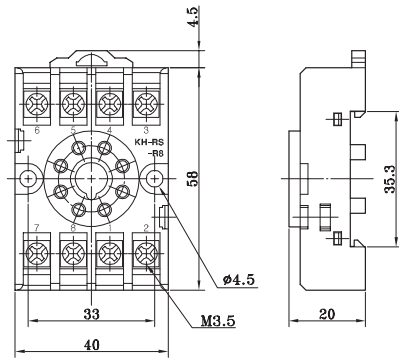
KH-TDR-R8



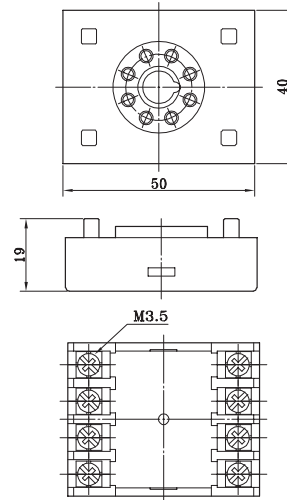
KH-KTS-8



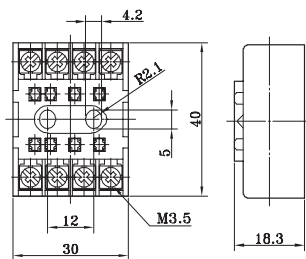
KH-RS-R8



KH-MR-8



KH-RS-M8



U 릴레이

V 소켓